

MISNA MEMBERS

Marine Exchange of Alaska

1000 Harbor Way, Suite 204
Juneau, Alaska 99801
Ph: (907) 463-2607 Fax: (800) 682-2898
edpage@mxak.org <http://www.mxak.org>

Chamber of Shipping of British Columbia

100-1111 West Hastings Street
Vancouver, British Columbia, V6E 2J3 Canada
Ph: (604) 681-2351 Fax: (604) 681-4364
info@cosbc.ca <http://www.cosbc.ca>

Marine Exchange of Puget Sound

100 West Harrison, Suite S560
Seattle, Washington 98119-4135
Ph: (206) 443-3830 Fax: (206) 443-3839
info@marexps.com
<http://www.marexps.com>

Merchants Exchange of Portland

200 Southwest Market Street, Suite 190
Portland Oregon 97201
Ph: (503) 228-4361 Fax: (503) 295-3660
misna@pdxmex.com <http://www.pdxmex.com>

Marine Exchange of San Francisco Bay Region

505 Beach Street, Suite 300
San Francisco, California 94133
Ph: (415) 441-6600 Fax: (415) 441-3080
misna@sfmtx.org <http://www.sfmtx.org>

Marine Exchange of Southern California

Physical: 3601 S. Gaffey Street, #803
San Pedro, California 90731
Mailing: P.O. Box 1949
San Pedro, California 90733
Ph: (310) 519-3134 Fax: (310) 241-0300
info@mxsocal.org <http://www.mxsocal.org>

The Greater Houston Port Bureau

111 E. Loop North
Houston, Texas 77029
Ph: (713) 678-4300 Fax: (713) 678-4839
info@txgulf.org <http://txgulf.org>

New Orleans Board of Trade

365 Canal Street, Suite 1580
New Orleans, Louisiana 70130
Ph: (504) 525-3271 Fax: (504) 525-9039
brett@nobot.org <http://www.nobot.org>

MISNA MEMBERS (CONTINUED)

Louisiana Maritime Association

3939 N. Causeway Boulevard, Suite 102
Metairie, Louisiana 70006
Ph: (504) 833-4190 Fax: (504) 833-4191
Ron.Branch@louisianamaritime.org
<http://www.louisianamaritime.org>

Jacksonville Marine Transportation Exchange

PO Box 3171
Jacksonville, Florida 32206-3171
Ph: (904) 634-1598 Fax: (904) 634-1593
jmtx@jmtx.org <http://www.jmtx.org>

Virginia Maritime Association

P.O. Box 3487
Norfolk, Virginia 23514-3487
Ph: (757) 622-2639 Fax: (757) 622-6302
vma@VAMaritime.com
<http://www.vamaritime.com/>

Baltimore Maritime Exchange, Inc.

3720 Dillon Street, Suite 216
Baltimore, Maryland 21224-5202
Ph: (410) 342-6610 Fax: (410) 327-4847
manager@balmx.org <http://www.balmx.org>

Maritime Exchange for the Delaware River & Bay

240-242 Cherry Street
Philadelphia, Pennsylvania 19106-1380
Ph: (215) 925-2615 Fax: (215) 925-3422
exchange@maritimedelriv.com
<http://www.maritimedelriv.com>

Maritime Association of the Port of New York/New Jersey

17 Battery Place, Suite 913
New York, New York 10004
Ph: (212) 425-5704 Fax: (212) 635-9498
themaritimeassoc@erols.com
<http://www.nymaritime.org>

Associate Member Maritime Information Systems

PO Box 207
Bristol, Rhode Island 02809
Ph: (401) 247-7780 Fax: (401) 247-7756
mjc@mgn.com <http://www.mgn.com>

MISNA



*A non-profit maritime organization
providing information,
communications and services to
aid safe, secure, efficient and
environmentally sound maritime
operations.*



www.misnadata.org

MISNA

Maritime Information Service of North America (MISNA) is a non-profit corporation founded in 1995 to provide information, communications and services to aid safe, secure, efficient and environmentally sound maritime operations. Its regular membership includes the independent non-profit maritime organizations in the United States and British Columbia, Canada. MISNA organizations are comprised of the broad cross section of maritime interests including but not limited to vessel owners and agents, ports, pilot associations, towing companies, stevedore and terminal operators, admiralty lawyers, customs brokers, ship repair firms, employer associations, insurance agencies, marine surveyors, maritime unions and oil spill response organizations.

Each MISNA member provides maritime information services to their respective members. Together, as MISNA, these members provide a composite of maritime information which includes vessel arrival data and real-time vessel tracking using MISNA's national Automatic Identification System (AIS) vessel tracking network

The Mission of MISNA is to facilitate maritime commerce by:

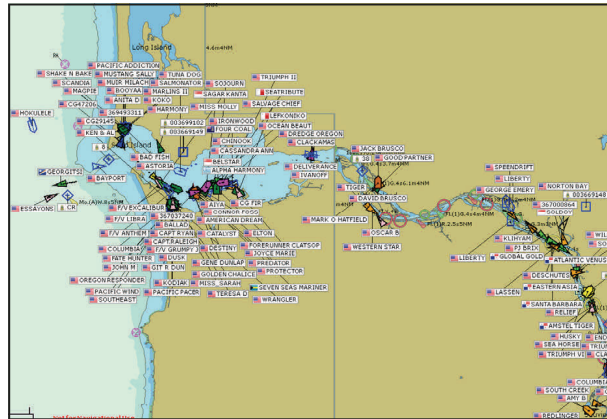
- ◆ Promoting safe, secure, efficient and environmentally sound maritime operations;
- ◆ Facilitate the efficient dissemination and utility of maritime information;
- ◆ Complementing vessel traffic service systems;
- ◆ Providing expertise and advice to government, industry and the public;
- ◆ Promoting development of networks for communication technology;
- ◆ Promoting industry and government partnerships; and
- ◆ Facilitating public-private projects and programs.

Real-Time Vessel Tracking

Vessels' AIS continually broadcasts a vessel's identity, position, speed and course, and other information between AIS equipped vessels providing a significant improvement in navigation safety.

Using a network of shore receiving stations, MISNA's AIS network is able to receive vessels' transmissions and provide agencies, owners, operators, associates as well as families the ability to monitor a vessel's location for added operational safety and efficiency.

Each MISNA member operates a regional AIS network. Combined, the MISNA network includes close to 200 receivers. Compiling this AIS data, MISNA can provide a cost-effective, real-time composite picture of vessel locations through the U.S. and into British Columbia that can be displayed on most computers using station software or web based applications.



MISNA MEMBERS

Products, Services and Strategic Partnerships:

MISNA provides the following products and services to its memberships and other public and private sector partners and interested public:

Vessel Monitoring

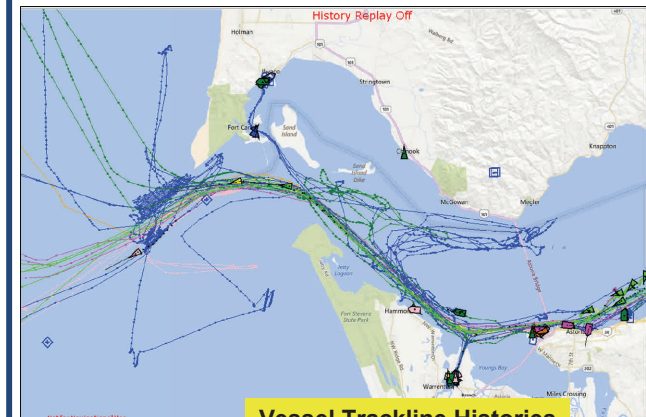
- ◆ Available by web, email, phone and fax
- ◆ Estimated times of arrival and departure
- ◆ Actual times of arrival and departure

Vessel Traffic Analysis

- ◆ Historical vessel movement inquiries
- ◆ Port and terminal utilization studies
- ◆ Competitive research/analysis
- ◆ Transit time evaluation
- ◆ Nationwide ship tracking
- ◆ Expert maritime analysis
- ◆ Vessel deviation studies

Strategic Partnerships

- ◆ Federal, State and local agencies and institutions
- ◆ Regulatory, safety, promotional, academic and scientific programs
- ◆ Coastal zone managers
- ◆ Non-profit associations



Vessel Trackline Histories